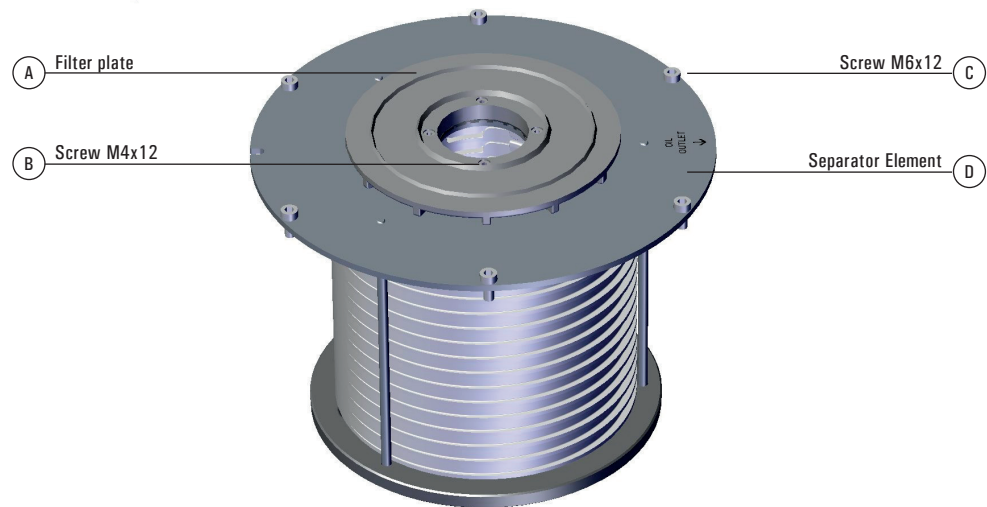




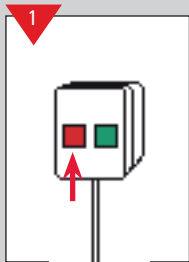
CLEAN OIL
BRIGHT IDEAS

RETROFIT GUIDE

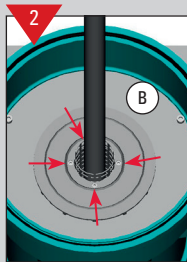
CJC™ Separator Element PTU3



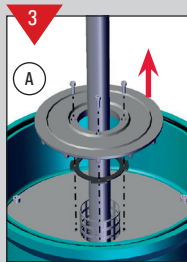
RETROFIT GUIDE



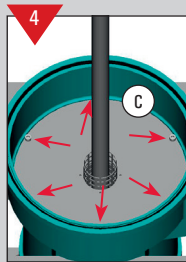
1 Stop CJC™ Filter. See CJC™ Filter Insert Replacement Guide up to picture 12



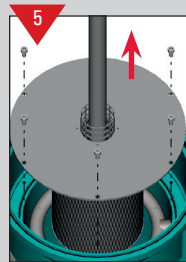
2 Loosen 4 screws for filter plate



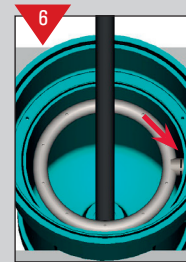
3 Remove filter plate and gasket



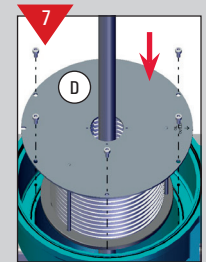
4 Loosen 6 screws for old coalescer element



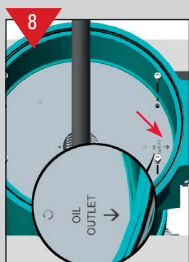
5 Remove old coalescer element



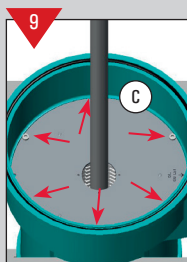
6 For models with a ring manifold: Remove ring by cutting it as close to oil outlet as possible



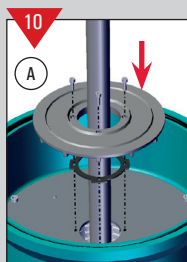
7 Place new CJC™ Separator Element



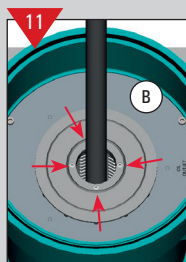
8 Make sure CJC™ Separator Element is placed correct



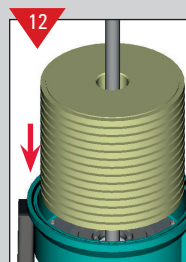
9 Tighten 6 screws for CJC™ Separator Element



10 Replace gasket and filter plate



11 Tighten 4 screws for filter plate



12 See CJC™ Filter Insert Replacement Guide from picture 13