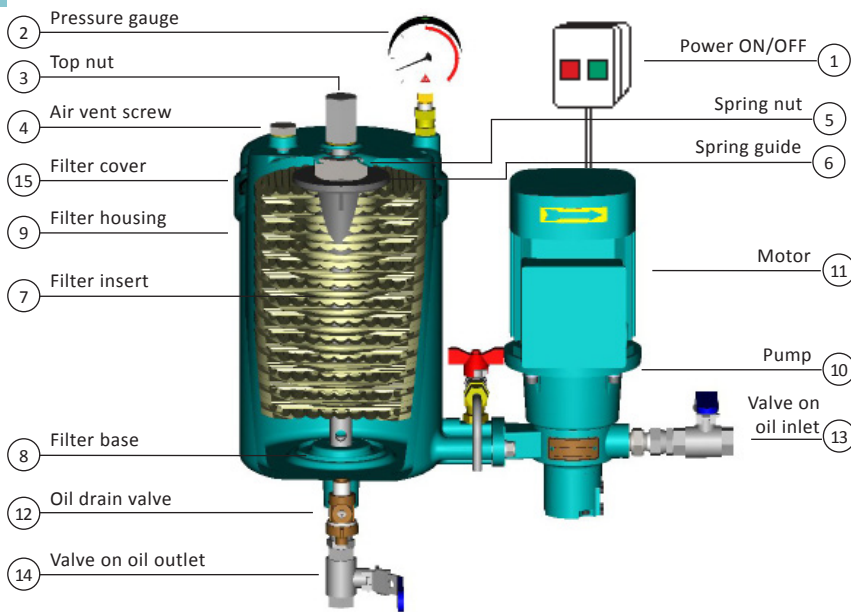


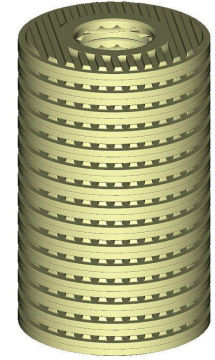


# Filter Insert Replacement

## CJC™ Fine Filter HDU 15/25



Keep filter insert in plastic bag until use



7 Filter insert

### FILTER INSERT REPLACEMENT

- Stop filter
- Close valve on oil inlet
- Close valve on oil outlet
- Open air vent screw
- Open oil drain valve and drain waste oil into container
- Unscrew top nut
- Lift off filter cover
- Unscrew spring nut
- Remove spring and spring guide
- Remove used filter insert
- Ensure filter base is clean
- Install new filter insert
- Mount spring guide carefully - make sure there is no contact between O-ring and thread
- Tighten spring nut
- Tighten spring nut until spring guide is level with top edge of filter housing. Tightening torque minimum 4 Nm / 3 ft lbf
- Replace O-ring and mount filter cover
- Replace O-ring and mount filter cover. Tighten top nut with torque of 70 Nm / 50 ft lbf
- Replace O-ring and mount filter cover. Tighten top nut with torque of 70 Nm / 50 ft lbf

All disposal according to environmental regulation!

PF1201 - 14.10.2013